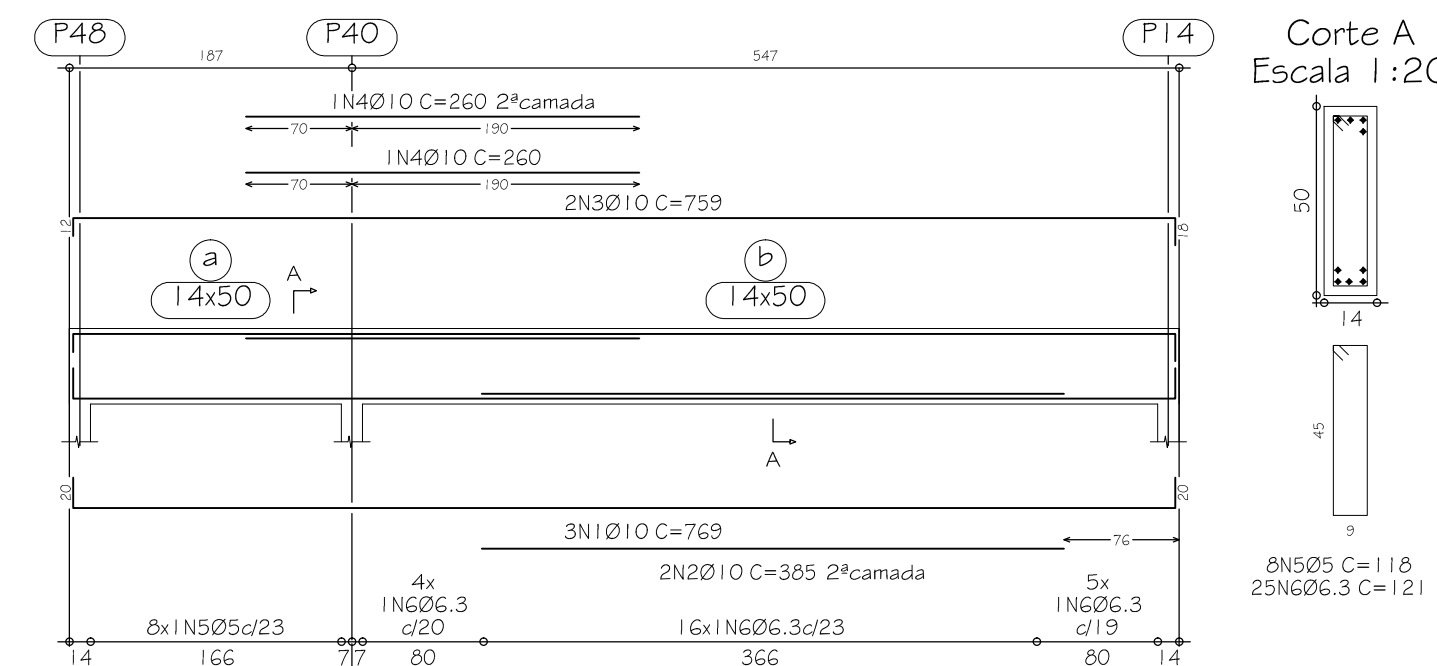
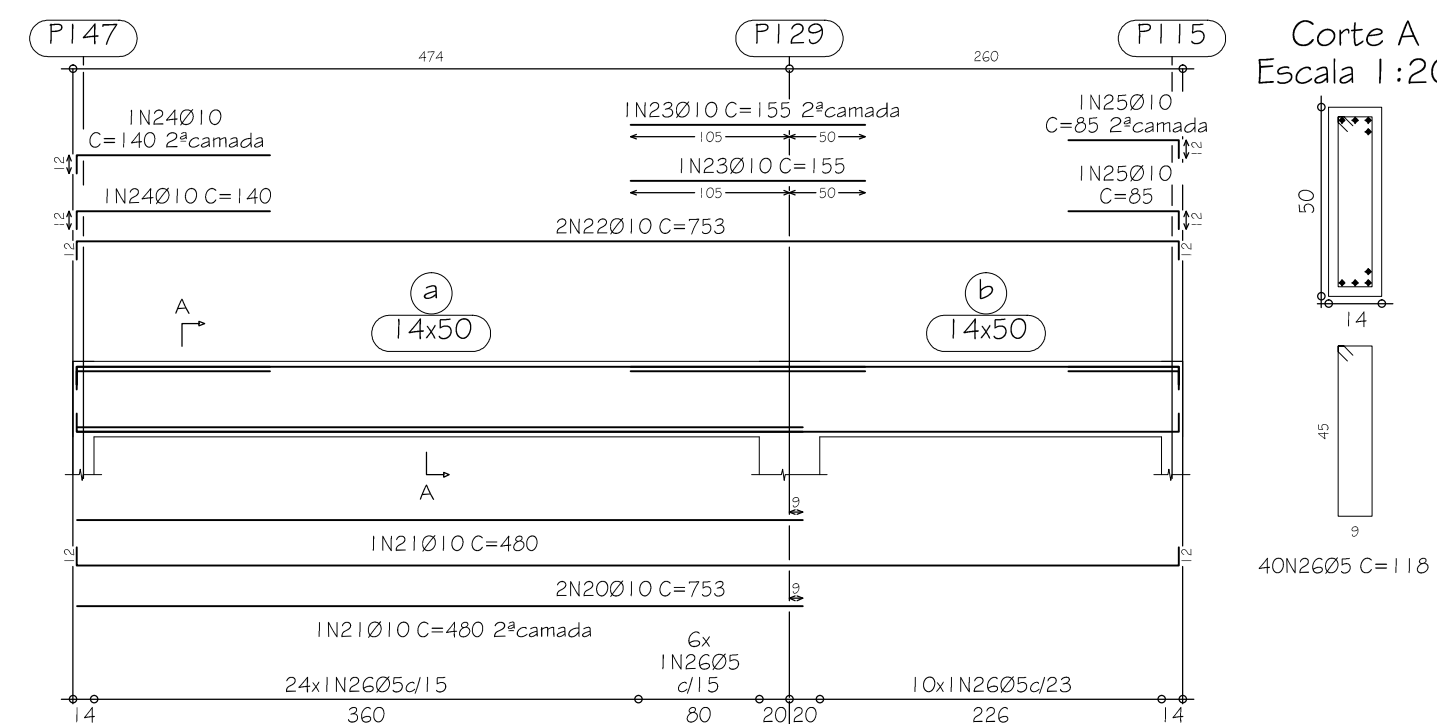


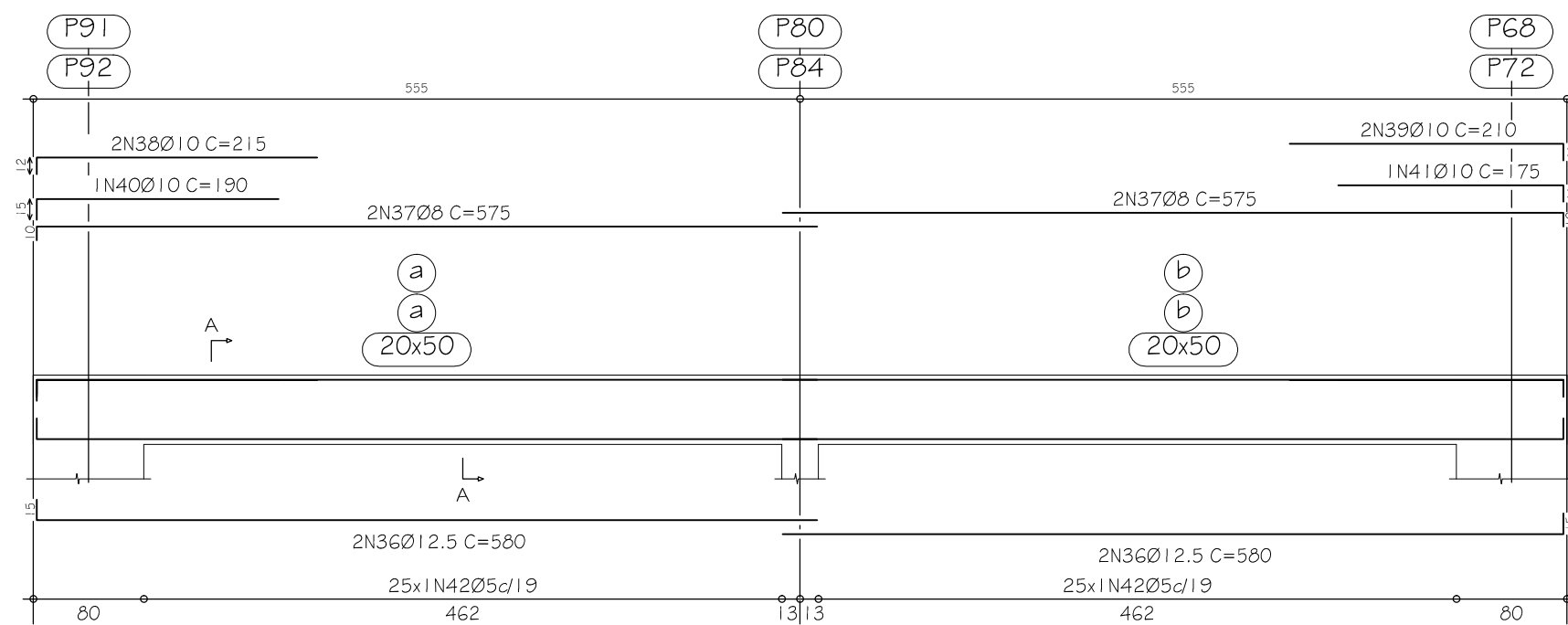
V 58  
Escala 1:50



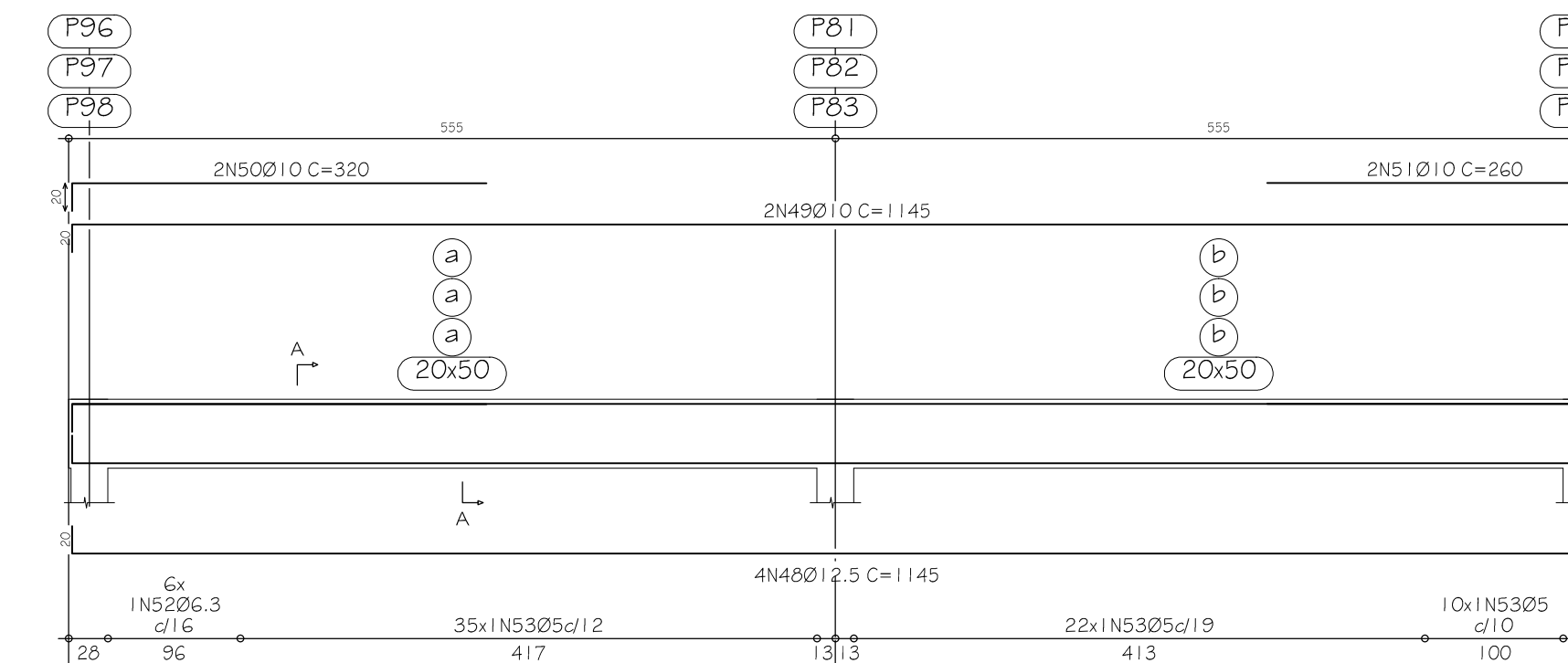
V 63  
Escala 1:50



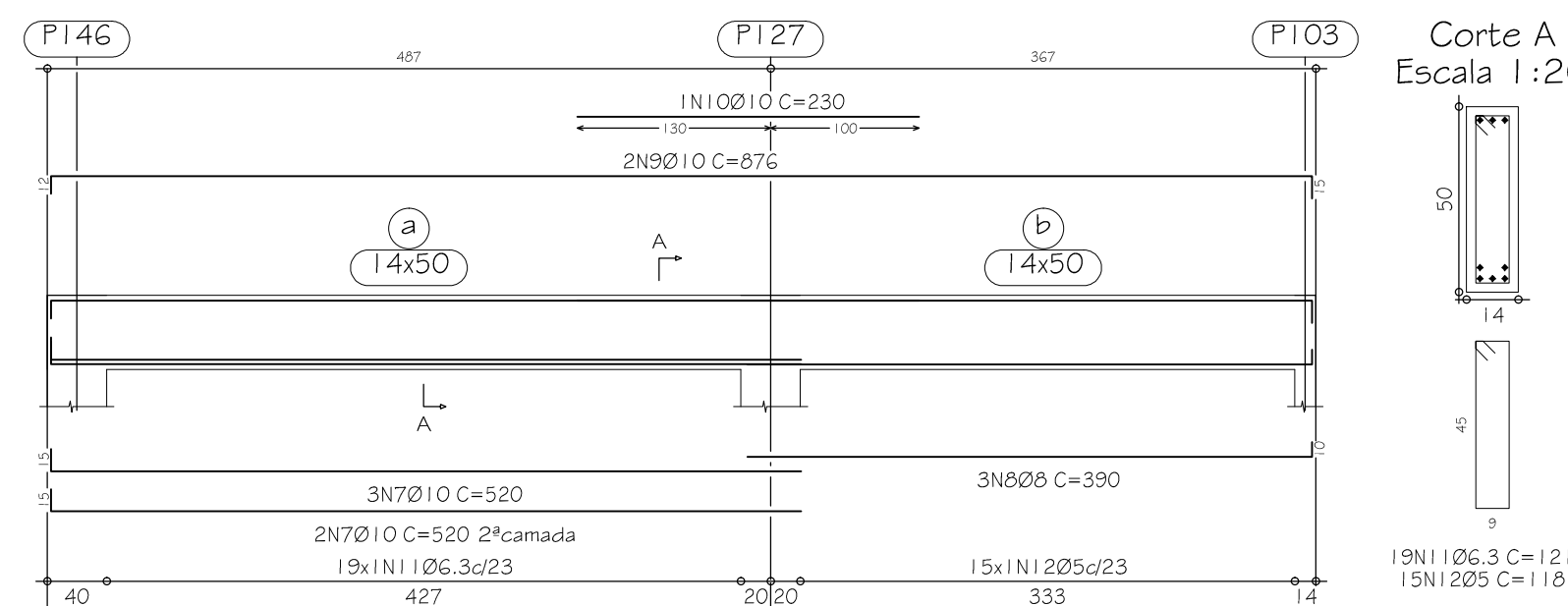
V 68  
V 96  
Escala 1:50



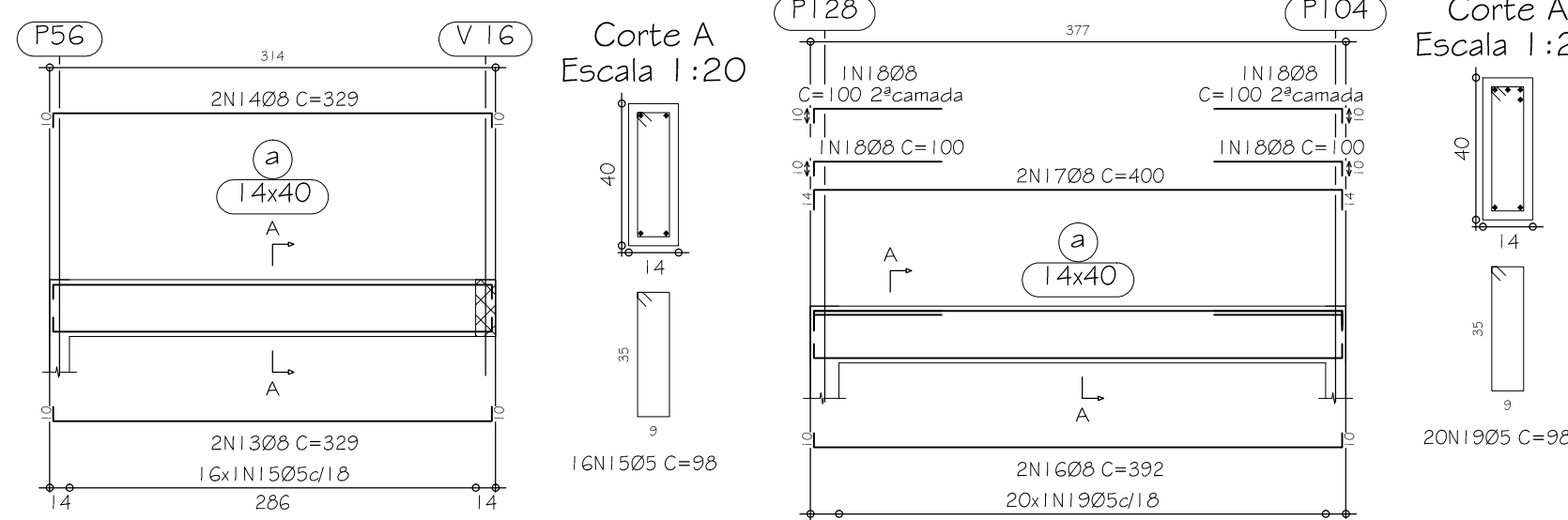
V 73  
V 80  
V 89  
Escala 1:50



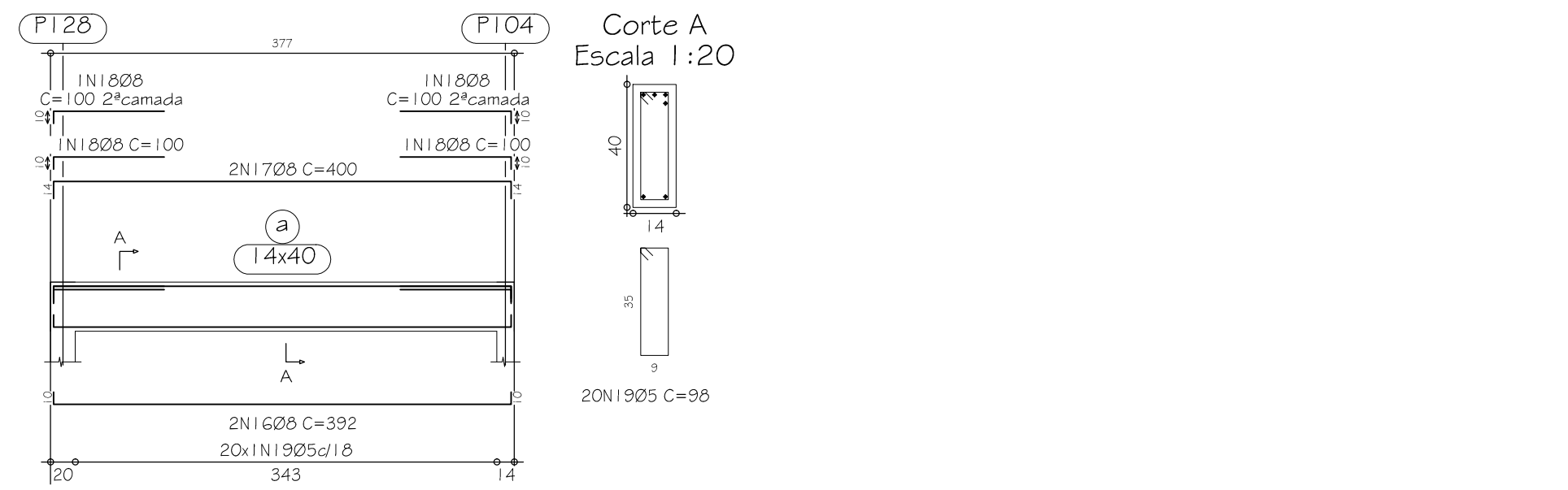
V 59  
Escala 1:50



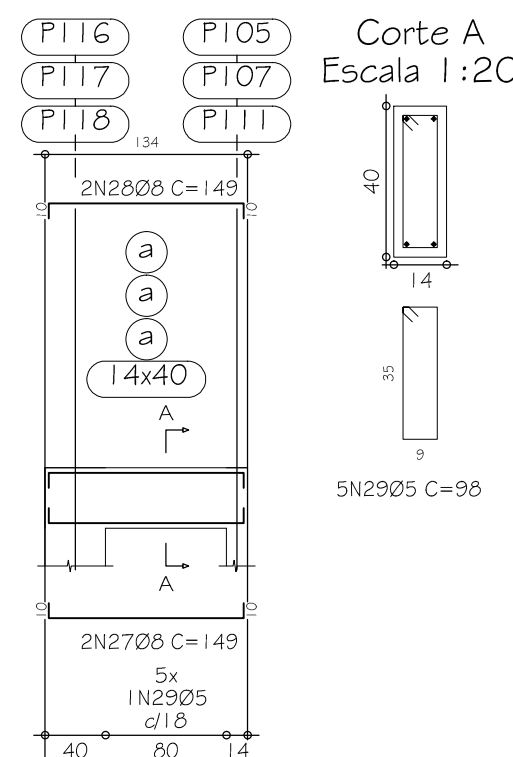
V 60  
Escala 1:50



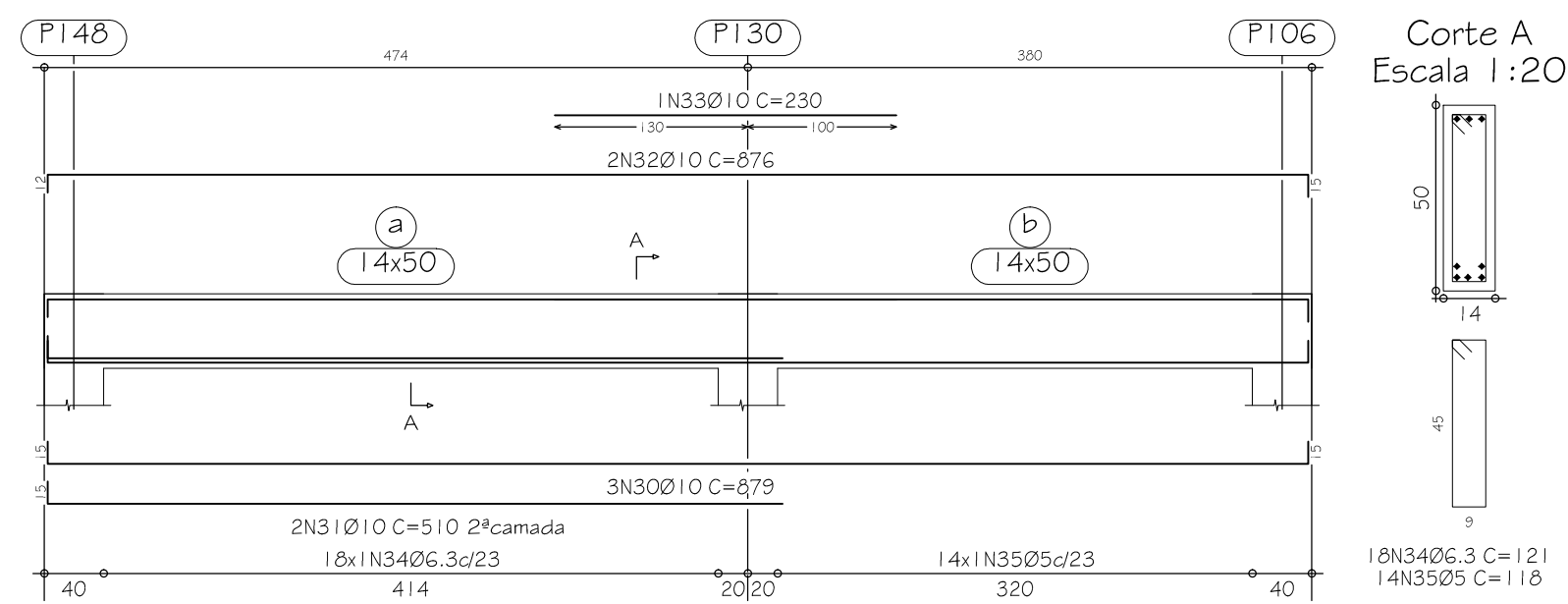
V 61  
Escala 1:50



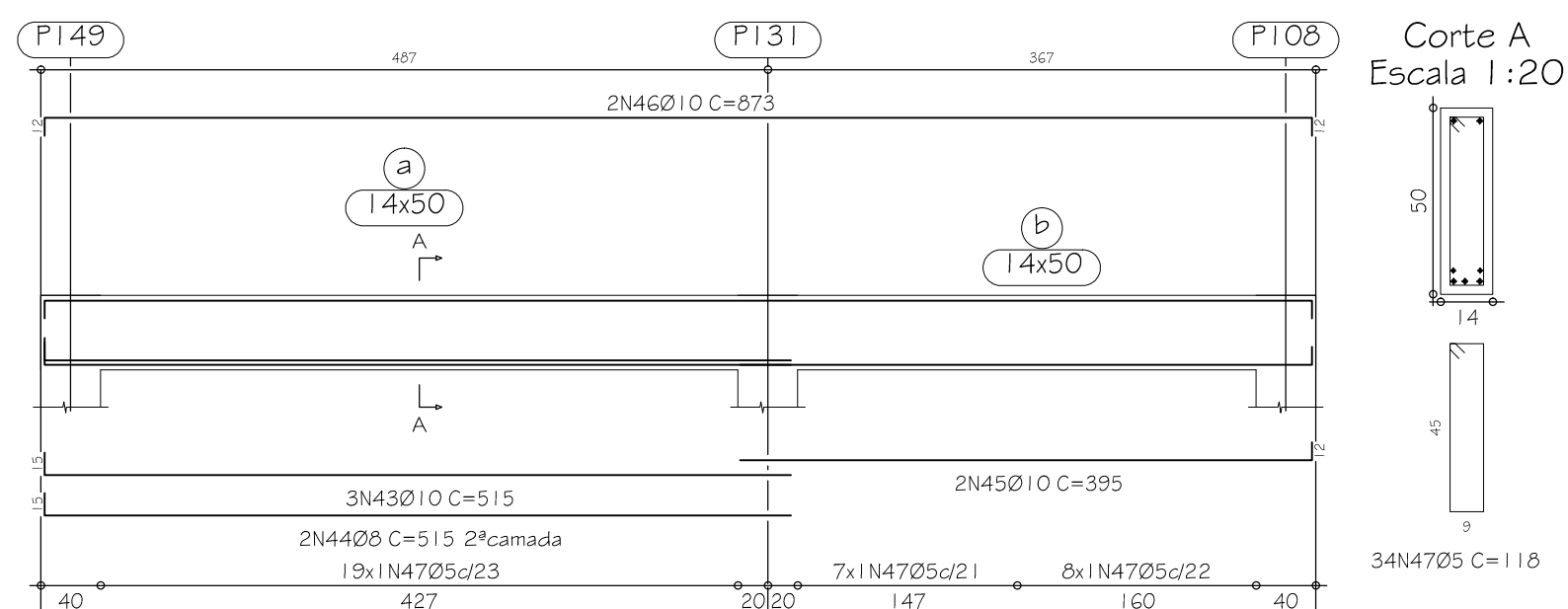
V 64  
V 69  
V 85  
Escala 1:50



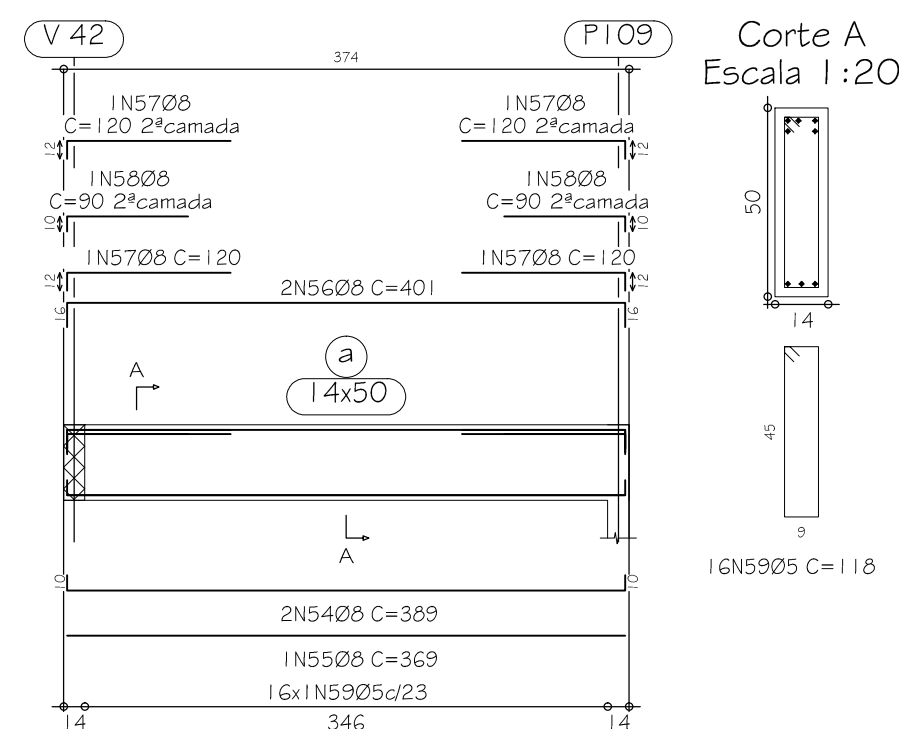
V 66  
Escala 1:50



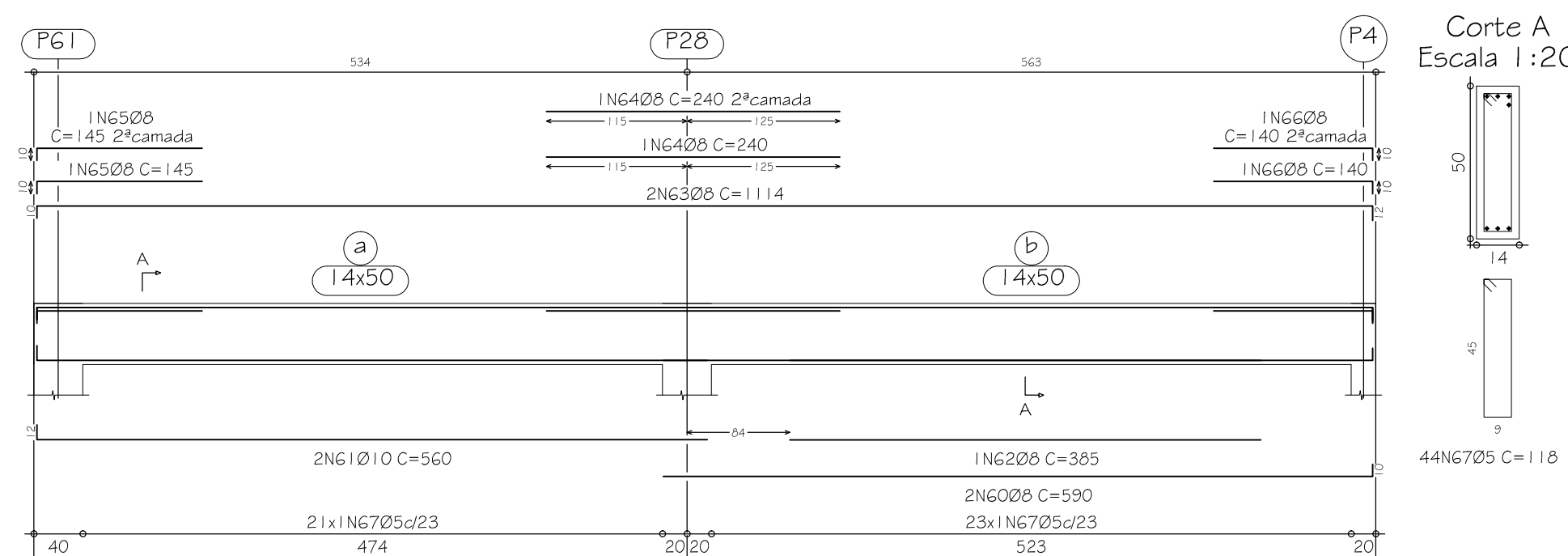
V 71  
Escala 1:50



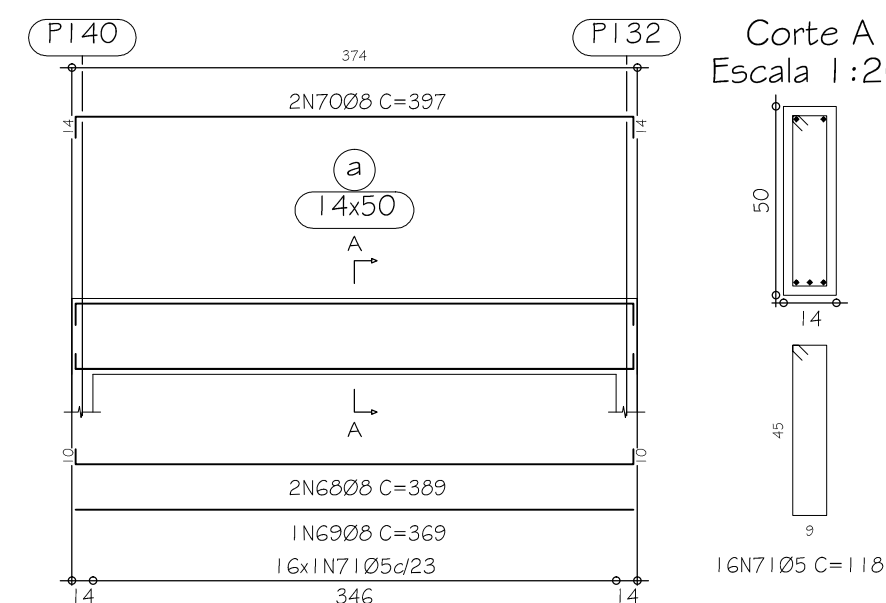
V 74  
Escala 1:50



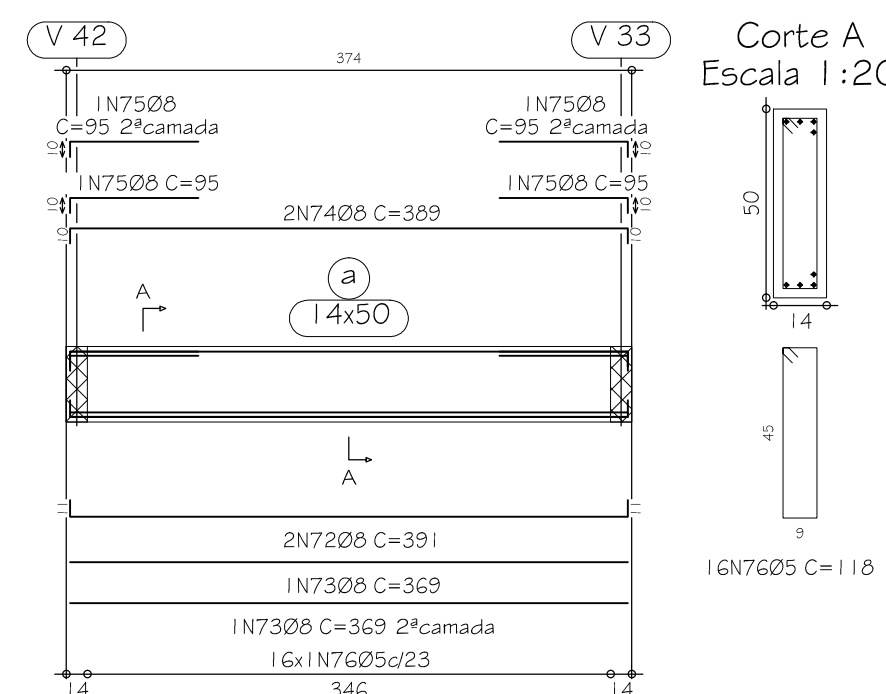
V 75  
Escala 1:50



V 76  
Escala 1:50



V 77  
Escala 1:50




Elemento	Pos.	Diam.	Q.	(Comp) (cm)	(Total) (cm)	CA-50-A (kg)	CA-60-B (kg)
V 58	1	Ø10	3	769	2307	14.5	
	2	Ø10	2	385	770	4.8	
	3	Ø10	2	759	1518	9.5	
	4	Ø10	2	260	520	3.3	
	5	Ø25	6	116	944		1.5
	6	Ø6.3	25	121	3025	7.5	
Total + I 0%:						43.6	1.7
V 59	7	Ø10	5	520	2600	16.3	
	8	Ø10	3	350	1050	4.6	
	9	Ø10	2	686	1752	11.0	
	11	Ø6.3	1	230	230	1.4	
	12	Ø6.3	19	121	2239	5.7	
	13	Ø5	15	116	1770		2.8
Total + I 0%:						42.9	3.1
V 60	13	Ø6	2	329	658	2.6	
	14	Ø6	2	329	658	2.6	
	15	Ø5	16	96	1566		2.5
Total + I 0%:						5.7	2.8
V 61	16	Ø6	2	392	783	3.1	
	17	Ø6	2	400	800	3.1	
	18	Ø6	4	100	400	1.6	
	19	Ø5	20	96	1960		3.0
Total + I 0%:						8.6	3.4
V 63	21	Ø10	2	753	1506	9.5	
	22	Ø10	2	480	960	6.0	
	23	Ø10	2	753	1506	9.5	
	24	Ø10	2	155	310	1.9	
	24	Ø10	2	140	280	1.8	
	25	Ø10	2	65	170	1.1	
	26	Ø5	40	116	4720		7.4
Total + I 0%:						32.8	
V 64 = V 63 = V 85	27	Ø6	2	149	298	1.2	
	28	Ø6	2	149	298	1.2	
	29	Ø5	5	96	490		0.5
	Total + I 0%:					2.6	0.9
V 66	30	Ø10	3	679	2637	16.6	
	31	Ø10	2	510	1020	6.4	
	32	Ø10	2	875	1750	11.0	
	33	Ø10	1	230	230	1.4	
	34	Ø6.3	18	121	2178	5.4	
	35	Ø5	14	116	1654		2.6
Total + I 0%:						44.9	2.9
V 68 = V 96	36	Ø12.5	4	560	2320	22.8	
	37	Ø6	4	575	2300	9.0	
	38	Ø10	2	215	430	2.7	
	39	Ø10	2	190	380	2.2	
	40	Ø10	1	90	190	1.0	
	41	Ø10	1	175	175	1.1	
	42	Ø5	50	130	6500		10.2
	Total + I 0%:					43.3	22.4
V 71	43	Ø10	3	515	1545	9.7	
	44	Ø10	2	515	1030	4.0	
	45	Ø10	2	395	790	5.0	
	46	Ø10	2	973	1746	11.0	
	47	Ø5	34	116	4012		6.3
Total + I 0%:						32.7	6.9
V 73 = V 80 = V 89	48	Ø12.5	4	1145	4590	44.9	
	49	Ø10	2	1145	2290	14.4	
	50	Ø10	2	320	640	4.0	
	51	Ø10	2	260	520	3.3	
	52	Ø6.3	6	133	798	2.0	
	53	Ø5	67	130	6710		13.7
Total + I 0%:					75.5	45.3	
V 74	54	Ø6	2	369	778	3.1	
	55	Ø6	1	369	369	1.4	
	56	Ø6	2	401	802	3.1	
	57	Ø6	4	120	480	1.9	
	58	Ø6	2	90	180	0.7	
	59	Ø5	16	116	1688		3.0
Total + I 0%:						11.2	3.3
V 75	60	Ø10	2	590	1180	4.6	
	61	Ø10	2	560	1120	4.5	
	62	Ø6	1	385	385	1.5	
	63	Ø6	2	1114	2228	6.7	
	64	Ø6	2	240	480	1.9	
	65	Ø6	2	145	290	1.1	
	66	Ø5	2	140	280	1.1	
Total + I 0%:						28.5	9.0
V 76	68	Ø6	2	369	778	3.1	
	69	Ø6	1	369	369	1.4	
	70	Ø6	2	387	794	3.1	
	71	Ø5	16	116	1688		3.0
Total + I 0%:						8.4	3.3
V 77	72	Ø6	2	381	762	3.1	
	73	Ø6	2	369	738	2.9	
	74	Ø6	2	389	778	3.1	
	75	Ø6	4	95	380	1.5	
	76	Ø5	16	116	1688		3.0
	Total + I 0%:					11.7	3.3
Ø5:						0.0	116.2
Ø6.3:						27.2	0.0
Ø6:						103.4	0.0
Ø10:						262.9	0.0
Ø12.5:						198.4	0.0
Total:						591.9	116.2

### DETALHAMENTO VIGAS BALDRAME

Escala 1:50

REVISÃO:	03		
REVISÃO:	02		
REVISÃO:	01		
EMISSÃO INICIAL:	* 24/05/2013	1ª ENTREGA PARA A PREFEITURA	

	<p>PREFEITURA MUNICIPAL DE JOINVILLE</p> <p>END.: Av. Herman August Lepper, nº10, Centro</p> <p>TEL.: (47)3431-3233 – Joinville – Santa Catarina</p> <p>CNPJ: 83.169.623/0001-10</p>	<p>COORDENAÇÃO DE PROJETOS:</p> <p><b>SOLAR</b> ENGENHARIA</p> <p>SOLAR CONSTRUÇÕES-PROJETOS E CONSULTORIA LTDA</p> <p>CNPJ: 13.411.864/0001-48</p> <p>TEL: (31)3568-2814 BH/MG</p> <p>eken@solarengharia.eng.br</p>
	<p><b>CEI LOT. NOVA VILA</b></p>	<p>ÁREA DO TERRENO:</p> <p>5.049,00 m²</p>
	<p>PREFEITURA MUNICIPAL DE JOINVILLE</p> <p>CNPJ: 83.169.623/0001-10</p> <p>CONTRATANTE</p>	<p>EDUARDO KEN MIZUTA</p> <p>CREA: 139067/D</p> <p>RESPONSÁVEL TÉCNICO</p>
<p>ENDEREÇO:</p> <p>RUA ROLANDO GURSKÉ, (449) – VILA NOVA – CEP 89237 – JOINVILLE</p>	<p>ARQUIVO:</p> <p>001-003-2013-EXE-EST-08</p>	<p>ÁREA CONSTRUÍDA:</p>
<p>DETALHES:</p>	<p>PROJETO:</p> <p><b>ESTRUTURAL</b></p>	<p>DATA:</p> <p>MAIO/2013</p>
<p>DETALHAMENTO VIGAS BALDRAME</p>	<p>DESENHISTA:</p> <p>ISABELLA TEOTONIO DIAS</p>	<p>ESCALA:</p> <p>INDICADA</p>
<p>PARTI 1</p>		<p>08 / 15</p>